

Starter Cage System ▶



TSIS starter cage is a basic and simple system for day old chick.

The cage compartment of 30" x 48".
100 to 120 birds can be filled up for the first week, 50 to 60 after a week old.

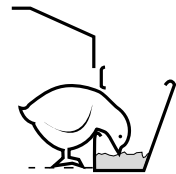
Cage height of 12" with front slant for easy bird handling. The start grow nipple are used until the birds are transferred.

Cage floor of 3/4" x 3/4" is friendly and comfortable to the birds. Reduce injury yet provides clean and healthy environment to the birds.



All the wire mesh and the support stand are hot-dip galvanized after weld (except door piece) to prevent from rust. The cage support stand is constructed and welded to a single piece component, thus gave better stability and easy row alignment.

The starter cage system come with standard travel feed cart. Feed access profile are adjustable to fit the size of pullet from day one, yet they are unable to slip into the feed trough.



TSIS cage system is durable and easy to maintenance.

Benefits for poultry producers:

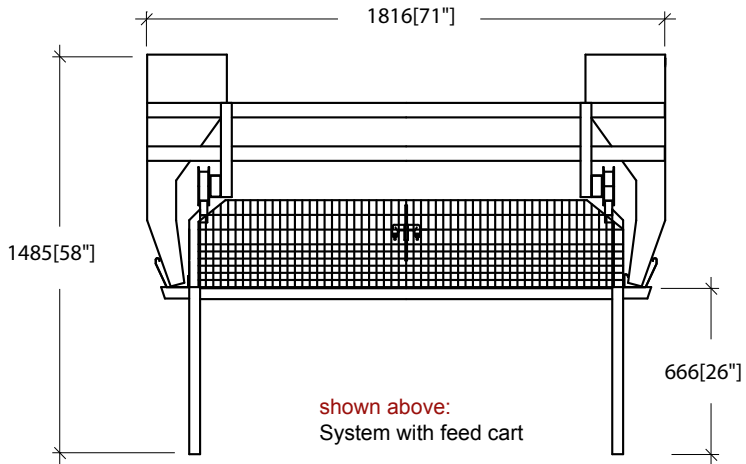
Labour and feed saving; less mortality; easy to manage; uniform birds; reduced disease problems

Optional accessories:

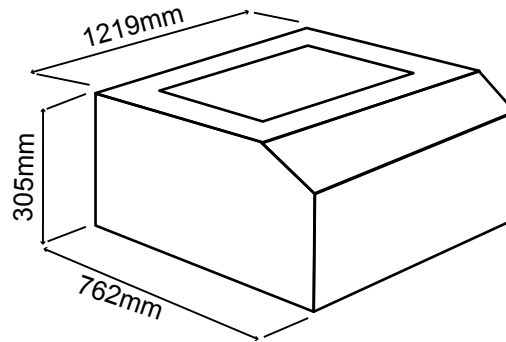
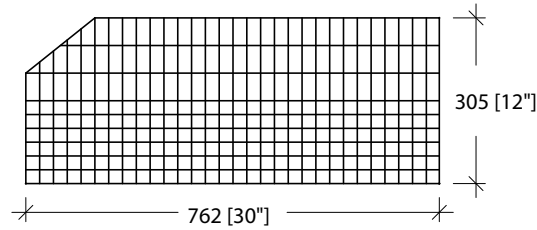
Curtain and accessories; air exchange heater system; transfer trolley



**SECTION VIEW :
TSIS STARTER CAGE SYSTEM WITH FEED CART**

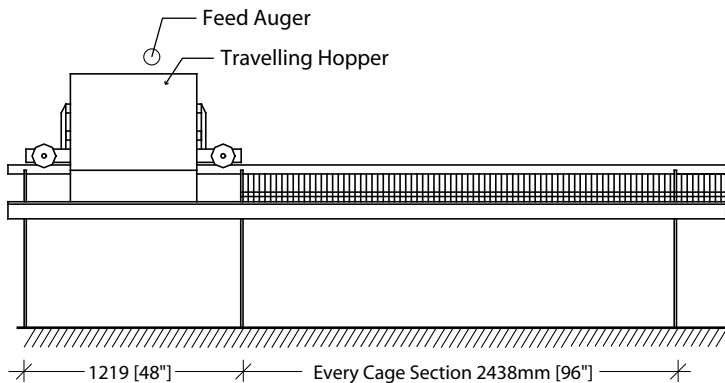


shown above:
System with feed cart



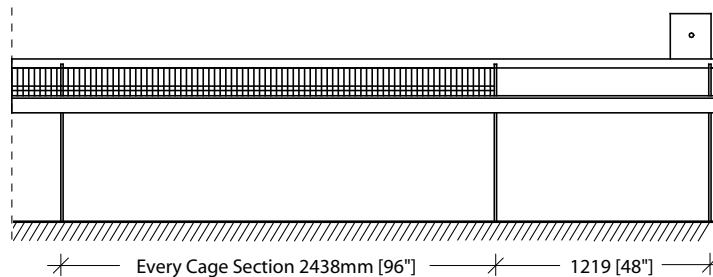
Cage Dimensions

LONGITUDINAL VIEW : TSIS STARTER CAGE SYSTEM WITH FEED CART



Start section kit

- Feed cart fill / park station
- Drive unit



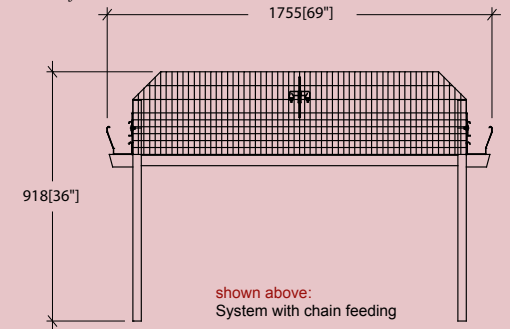
End section kit

- Feed cart park station
- Idler unit

* All dimension in mm (inch)

Cage Specification	
Model	Starter Cage
Period	0 to 35 days (maximum)
Density of bird per compartment	1 - 7 days 100 - 120 birds 7 - 35 days 50 or 60 birds
Floor area - cm ² (in ²)	50 birds = 186 cm ² (28.8 in ²) 60 birds = 155 cm ² (24.0 in ²)
Each compartment size- mm (inch)	305mm x 762mm x 1219mm (H12" x D30" x W48")
Every cage section	4 compartments
Cage Section Length	2438mm (96")
Cage Section Width	1829mm (72")
Start & end kit unit length	2438mm (96")
Cage Design	Wire
Standard material	Hot dip galvanized after weld
Door Piece Material	Hot-dip galvanized before weld
Feeder Specification	
Feeding	Feed cart (standard)*
Drive unit	0.5h.p (0.375 kw) per row
Feed trough	Front feeding (feed saving high lip trough)
Material	0.8 - 1 mm galvanized steel sheet
Watering Specification	
Watering	Nipple (adjustable height)
Diameter of supply line	1"
Water supply with	Flo-regulator
Drinker per compartment	4

* chain feeder also available.



shown above:
System with chain feeding

Equipment specification subject to change without prior notice.



Tong Seh Industries Supply Sdn. Bhd.
 Lot 780, Block A, Jalan Sungai Putus, Off Jalan Kapar,
 3 ¼ Miles, 42100 Klang, Selangor, Malaysia.
 Tel: (603)-3291 6958, 3291 1267 Fax: (603)-3342 8360, 3291 5198
 Website: www.tongseh.com.my E-mail: enquiry@tongseh.po.my